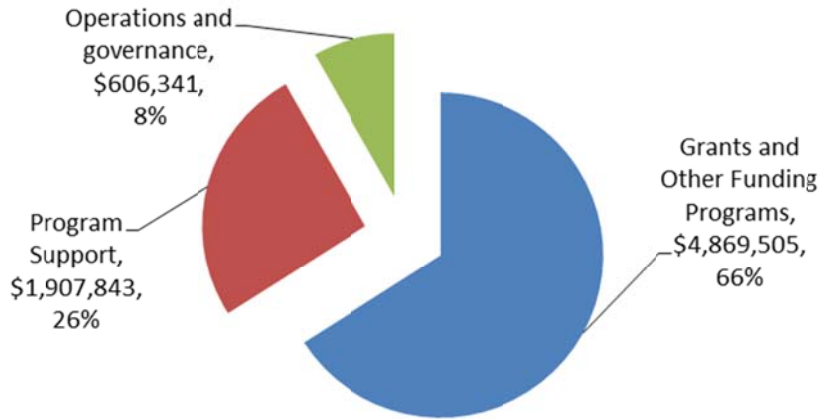


Financial and Statistical Highlights 2013

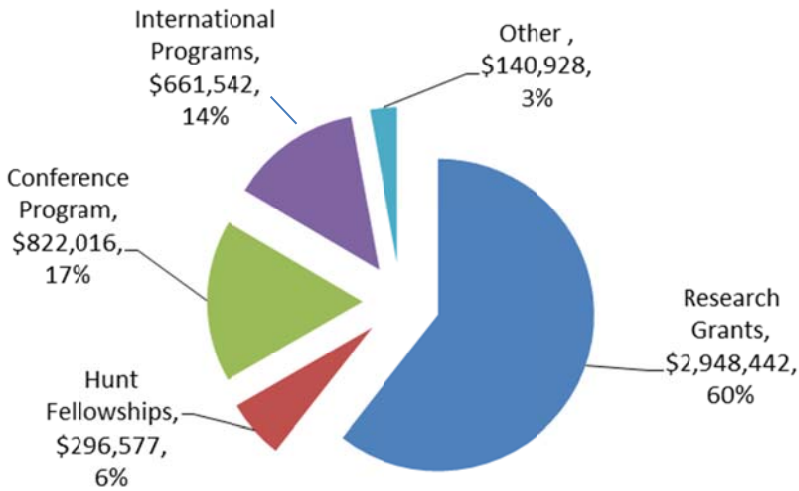
In 2013 the Foundation provided \$4,869,505 in direct support to Anthropology. This amount comprised 66% of the Foundation's total annual budget. The remaining funds were expended on overhead costs directly related to our funding programs (Program Support = \$1,907,843 or 26% of total expenditure) and on running expenses (Operations and Governance = \$606,341 or 8% of total expenditure).

The Budget Allocation by Major Program Category shows that 60% of the direct expenditure is for Research Grants (Dissertation Fieldwork and Post-Ph.D. Research Grants), 6% to the Hunt Postdoctoral Fellowships, 17% to the Conference Program, 14% to International Programs and the remainder (3%) to other smaller programs.

Funding Programs and Overhead Costs -- 2013

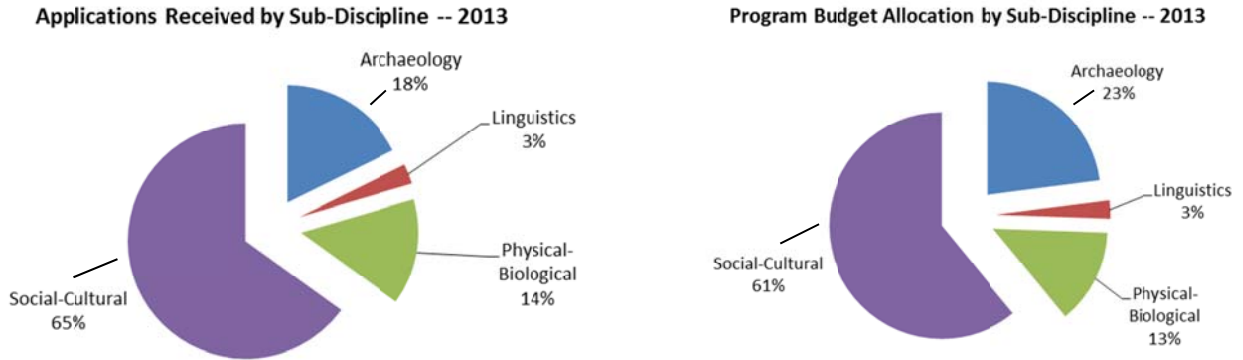


Budget Allocation by Major Program Category -- 2013

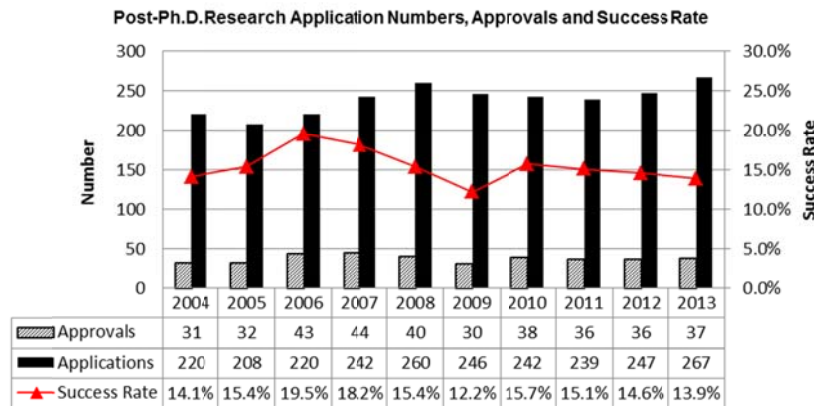
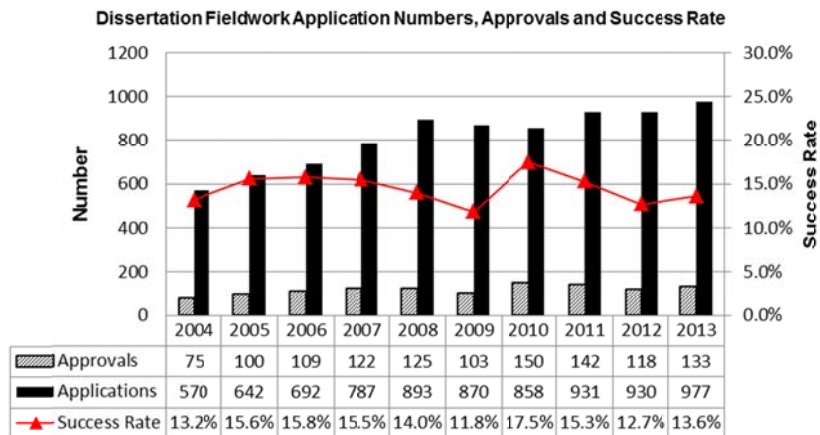


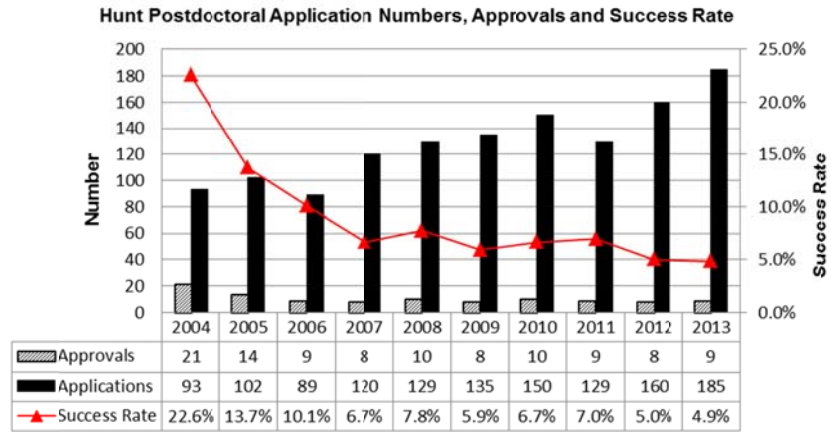
- Notes:
- Research Grants = Dissertation Fieldwork Grant, Post Ph.D. Research Grant
 - Conferences = Conference & Workshop Grant, Wenner-Gren Symposia & *Current Anthropology* supplementary issues
 - International = International Collaborative Research Grants, Wadsworth Fellowships, Institutional Development Grants
 - Other = smaller funding programs

The Program Budget Allocation by Sub-Discipline represents grants awarded and is in rough proportion to the number of applications received from the sub-disciplines.

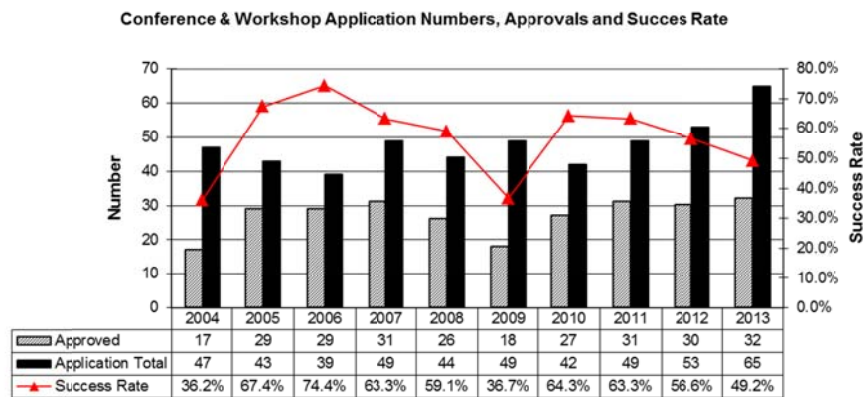


The following are historical statistics for the major grant programs.





Note that the decline in the success rate from 2004 for Hunt Fellowships reflects a change Foundation policy, which limited Hunt Fellowships to eight 12-month fellowships per annum. After 2006, the number of awards higher than eight reflects the award of multiple, shorter fellowships.



Additional detail can be found in the audited financial statements and in the funding statistics section of the 2013 Annual Report.